

**Performance and productivity**

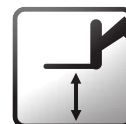
- Best load capacities
- Rear axle lock and tilt corrector in standard
- Flow Sharing in standard enabling a simultaneous and proportional control of 4 movements

Powerful and robust

- High strength monoblock chassis
- Rough terrain capacities
- Hydrostatic transmission and inching pedal

Comfort and ergonomics

- Driving position reducing fatigue at work
- LMI easy to read including automatic cut off dangerous movements
- High safety cab
- Smart control 4 in 1 Joystick



Placing height : 16.7m

Maximum lift capacity :
4000 kg**Haulotte** 
GROUP
More than lifting



HTL 4017



TELEHANDLER

Haulotte

GROUP

Placing height : 16.7m

Maximum lift capacity : 4000 kg



PERFORMANCES

Maximum lift capacity	4000 kg
Lift capacity to full height	2500 kg
Lift capacity at full reach	700 kg
Maximum fork height	16.7 m
Reach at maximum fork height	2.4 m
Maximum forward reach	12.85 m



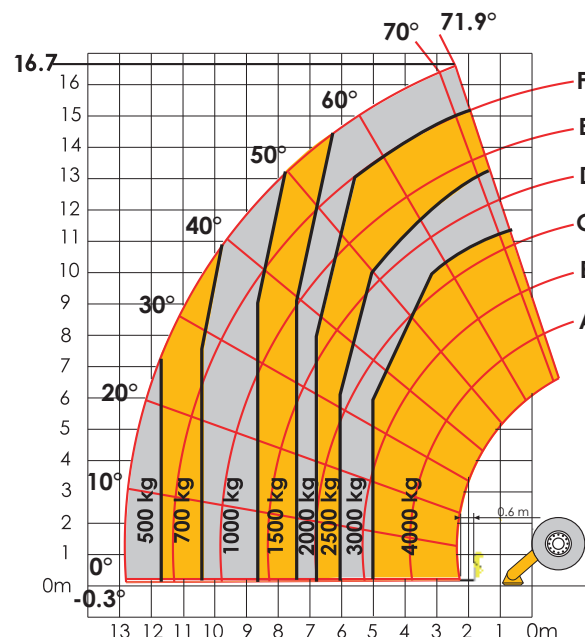
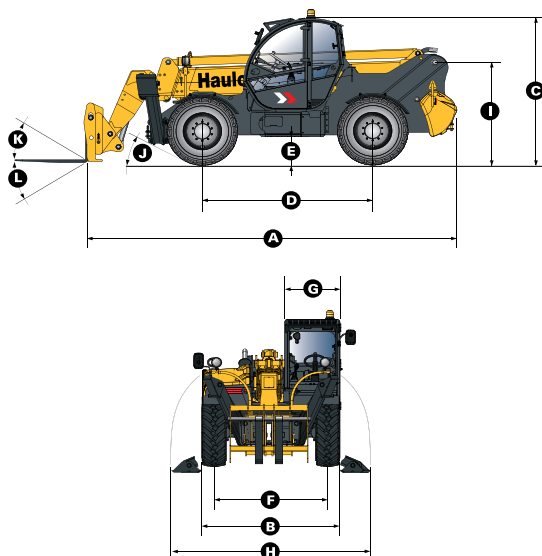
DIMENSIONS

A Length	6.7 m
B Width	2.43 m
C Height	2.6 m
D Wheelbase	2.89 m
E Ground clearance	50 cm
F Track width	1.93 m
G Cab width	0.96 m
H Overall width - stabilizers down	3.34 m
I Height to high boom pivot	1.75 m
J Approach angle	29 °
K Upper rotation of forks	18 °
L Lower rotation of forks	104 °
Weight with forks	11710 kg
Tyres type	400/80-24



ENGINE

	TIER III	TIER IV
Engine model	PERKINS	KOHLER
Engine Capacity	4400 cm ³	3400 cm ³
Engine power output	70 kW	55,4 kW
Engine torque	392 Nm	380 Nm
Transmission type	Hydrostatic	
Fuel tank	130 l	130 l
Engine oil	7 l	15 l



STANDARD EQUIPMENT

- Hydrostatic transmission
- 4 wheel drive and steer
- Simultaneous and proportional controls for boom / telescopic arm / excavation and accessories movements
- Safety valves on hydraulic jacks
- Auxiliary hydraulic system
- Cut-off of dangerous movements when overloaded
- Tilt corrector: $\pm 10^\circ$
- ROPS/FOPS cabin with heating and ventilation
- Hydraulic rear axle locking

OPTIONS AND ACCESSORIES

- Cold Weather Package
- Biodegradable oil
- Cold environment oil
- Hot environment oil
- Air conditioning
- Working lights
- Metal windscreen protector (FOPS)
- Buckets
- Winches
- Jibs
- Tools carriage with integrated hook

UNITED
Forklift and
Access Solutions

131 607

www.unitedequipment.com.au

SALES | RENTALS | SERVICE | PARTS | FINANCE | TRAINING
Perth | Bunbury | Melbourne | Ballarat | Sydney | Brisbane | Darwin